

# BRACKET SYSTEMS



Brackets



# PURE<sup>®</sup>

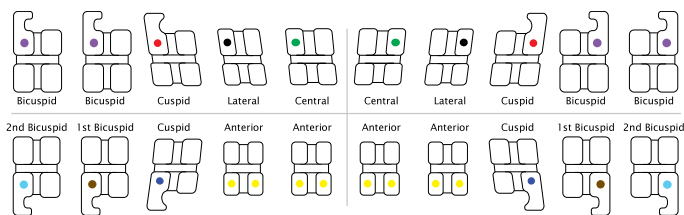
Sapphire Bracket System

## The Ultimate in Crystal Clear Aesthetics™

**COMPARE TO:**  
Inspire ICE™ by Ormco

- 
- Smooth, Strong and Contoured Tie-Wings**  
For added patient comfort
  - Archwire Slot Design**  
Diamond and heat polished for superior sliding mechanics
  - Highest Quality Material**  
Made from high quality monocrystalline sapphire
  - Unique Bonding Base**  
Aluminum oxide spheres provide superior shear bond strength and predictable debonding
  - Ultra-Smooth, Strong Hooks**  
For added patient comfort and secure engagement of elastics
  - Removable Color Coded ID Dot**  
For easy bracket selection
  - Ample Tie-Wing Area**  
For easy bracket ligation
  - Contour Base**  
Provides simplified and accurate bracket placement

### Identification System



© 2021 Ortho Technology, Inc. PURE is a registered trademark of Ortho Technology. U.S. and International patents pending. Inspire ICE is a trademark of Ormco/Sybron Dental Specialties.



## PURE® Patient Aesthetics



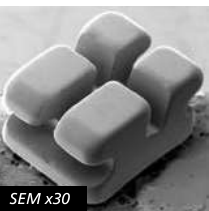
The macro photograph shows the clarity of the flawless PURE brackets. Made from pure monocrystalline sapphire for a bracket system with the highest transparency available for outstanding aesthetics. Nearly invisible against any tooth shade and stays crystal clear without staining.

## PURE® Contoured Base



The anatomically contoured bracket base allows for quick and easy bracket placement. The customized tooth specific design fits the tooth curvatures perfectly to increase bond strength and simplify bonding appointments.

## PURE® Patient Comfort



Each PURE bracket has been diamond and heat polished to produce rounded, smooth corners for uncompromised patient comfort. The small bracket size and low profile design also provide a desirable bracket both clinicians and patients will appreciate. The PURE brackets are also functional, the tie-wings are easy to ligate, exceptionally strong and highly fracture resistant.

## PURE® Predictable Debonding



Remove all ligatures and wires. Remove flash from around the brackets with a high speed debonding bur.

Instruct the patient to bite down onto a cotton roll in the area brackets are being removed. Grasp the bracket with a straight or angled debonding plier at the bracket-adhesive interface. The bracket can be held along the occlusal-gingival or the mesial-distal edge. Gently squeeze the plier and gradually increase pressure until the bracket comes free from the tooth. Do not twist or pull the bracket.

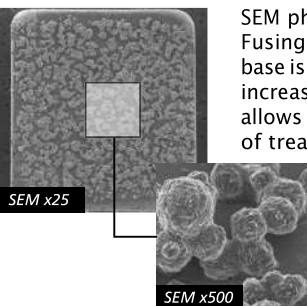


The bracket is designed to release at the bracket-adhesive interface and will leave a layer of adhesive on the enamel for safety. This means that most of the adhesive will remain on the tooth after debonding.



Remove remaining adhesive with a high speed debonding bur or an adhesive removing plier. After bulk adhesive is removed follow up with a high or low speed enamel polishing bur.

## PURE® Bond Strength



SEM photographs show the unique Double Fusing Method™ (DFM). The PURE bonding base is coated with aluminum oxide spheres, increasing the bonding surface area, which allows for secure retention during the length of treatment and provides for predictable debonding at the end of treatment.

# BRACKET SYSTEMS



Brackets



## Single Patient Kit Description

**Upper/Lower 3x3**  
1 kit (12 brackets)

**Upper/Lower 5x5**  
1 kit (20 brackets)

**Upper 5-5**  
1 kit (10 brackets)

**Individual Brackets**  
1 pack (10 brackets)

## PURE®

Ortho Technology's version of the Roth Prescription\*

▲ Maxillary Arch	Torq.	Ang.	Width	R/L	.018" Slot	.022" Slot
1 1 Central	+11°	+5°	.126"	R	S18001	S22101
				L	S18002	S22102
2 2 Lateral	+8°	+9°	.116"	R	S18011	S22111
				L	S18012	S22112
3 3 Cuspid with hook	+2°	+8°	.126"	R	S18021	S22121
				L	S18022	S22122
4/5 4/5 Bicuspid	-7°	0°	.126"	U	S18030	S22130
4/5 4/5 Bicuspid with hook	-7°	0°	.126"	R	S18031	S22131
				L	S18032	S22132

\*The Ortho Technology version of the Roth Rx is not implied to be an exact version of any other system, nor do we claim any endorsement of Dr. Roth.

## Patient Kits

Description	.018" Slot	.022" Slot
Upper/Lower 3x3 No Hooks	S18100	S22100
Upper/Lower 3x3 Hooks on Cuspids	S18300	S22300
Upper/Lower 5x5 No Hooks	S18310	S22310
Upper/Lower 5x5 Hooks on Cuspids	S18330	S22330
Upper/Lower 5x5 Hooks 3, 4, & 5	S18340	S22340
Upper 5-5 No Hooks	S18320	S22320
Upper 5-5 Hooks on Cuspids	S18360	S22360
Upper 5-5 Hooks 3, 4, & 5	S18370	S22370

▼ Mandibular Arch	Torq.	Ang.	Width	R/L	.018" Slot	.022" Slot
1/2 1/2 Lower Anterior	0°	0°	.112"	U	S18041	S22141
3 3 Cuspid with hook	-11°	+7°	.126"	R	S18051	S22151
				L	S18052	S22152
4 4 1st Bicuspid	-17°	0°	.126"	U	S18060	S22160
4 4 1st Bicuspid with hook	-17°	0°	.126"	R	S18061	S22161
				L	S18062	S22162
5 5 2nd Bicuspid	-21°	0°	.126"	U	S18070	S22170
5 5 2nd Bicuspid with hook	-21°	0°	.126"	R	S18071	S22171
				L	S18072	S22172

## PURE®

Ortho Technology's version of the McLaughlin, Bennett, & Trevisi Prescription\*

▲ Maxillary Arch	Torq.	Ang.	Width	R/L	.022" Slot
1 1 Central	+17°	+4°	.126"	R	S22801
				L	S22802
2 2 Lateral	+10°	+8°	.116"	R	S22811
				L	S22812
3 3 Cuspid with hook	0°	+8°	.126"	R	S22821
				L	S22822
4/5 4/5 Bicuspid	-7°	0°	.126"	U	S22833
4/5 4/5 Bicuspid with hook	-7°	0°	.126"	R	S22831
				L	S22832

\*The Ortho Technology version of the McLaughlin, Bennett, & Trevisi Rx is not implied to be an exact version of any other system, nor do we claim any endorsement of the respective doctors.

## Patient Kits

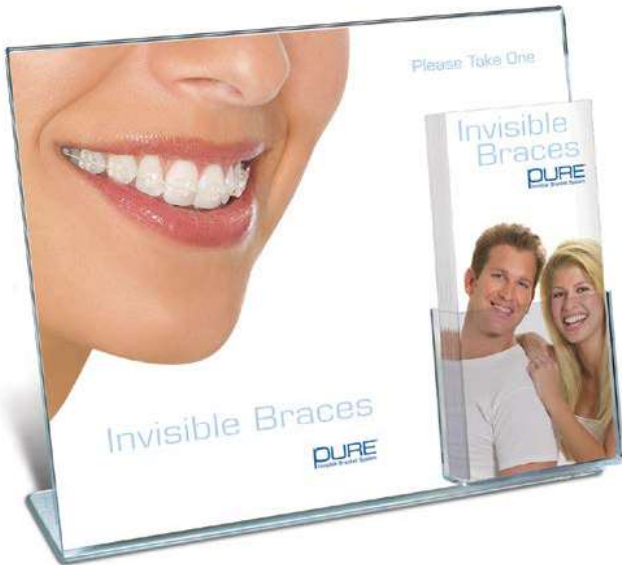
Description	.022" Slot
Upper/Lower 3x3 No Hooks	S22810
Upper/Lower 3x3 Hooks on Cuspids	S22800
Upper/Lower 5x5 No Hooks	S22820
Upper/Lower 5x5 Hooks on Cuspids	S22830
Upper/Lower 5x5 Hooks 3, 4, & 5	S22840
Upper 5-5 No Hooks	S22850
Upper 5-5 Hooks on Cuspids	S22860
Upper 5-5 Hooks 3, 4, & 5	S22870

▼ Mandibular Arch	Torq.	Ang.	Width	R/L	.022" Slot
1/2 1/2 Lower Anterior	-6°	0°	.112"	U	S22841
3 3 Cuspid with hook	0°	+3°	.126"	R	S22851
				L	S22852
4 4 1st Bicuspid	-12°	+2°	.126"	R	S22863
				L	S22864
4 4 1st Bicuspid with hook	-12°	+2°	.126"	R	S22861
				L	S22862
5 5 2nd Bicuspid	-17°	+2°	.126"	R	S22873
				L	S22874
5 5 2nd Bicuspid with hook	-17°	+2°	.126"	R	S22871
				L	S22872

# Marketing Tools to *GROW Your Practice!*



Brackets



**PURE Patient Consultation Center**  
with 25 Full Color Brochures  
Item #: S200

*Stand design may vary.*



**PURE Wall Poster**  
**18" x 24" Full Color**  
Item #: L-00293  
1 per pack

**PURE Patient Brochure Refills**  
1 Refill Pack of 25 Full Color Trifold Brochures  
Item #: S225



**PURE Typodont**  
Item #: G50-105



## PURE® Standard Edgewise

**Patient Kits**  
**Description**  
Upper/Lower 5x5 No Hooks  
Upper/Lower 5x5 Hooks on Cuspids

**Item Numbers**  
**.018" Slot .022" Slot**  
S18350 S22350  
S18450 S22450

Standard Edgewise	Torq.	Ang.	Width	R/L	.018" Slot	.022" Slot
Centrals	0°	0°	.126"	U	S18400	S22400
Laterals	0°	0°	.116"	U	S18410	S22410
Cuspids	0°	0°	.126"	U	S18420	S22420
Cuspids with hook	0°	0°	.126"	UR/LL	S18421	S22421
				UL/LR	S18422	S22422
Bicuspid	0°	0°	.126"	U	S18430	S22430
Lower Anterior	0°	0°	.112"	U	S18440	S22440